

The hotel is located 10km from the center of Rapallo, 600mslm and can be reached on foot along the mule track, by cable car (7min.), By bus or by own means, here are the directions from the highway to the Hotel



44°22'8.980"N 9°15'12.920"



Out the Motorway exit stay on the left
and go straight (-12km)



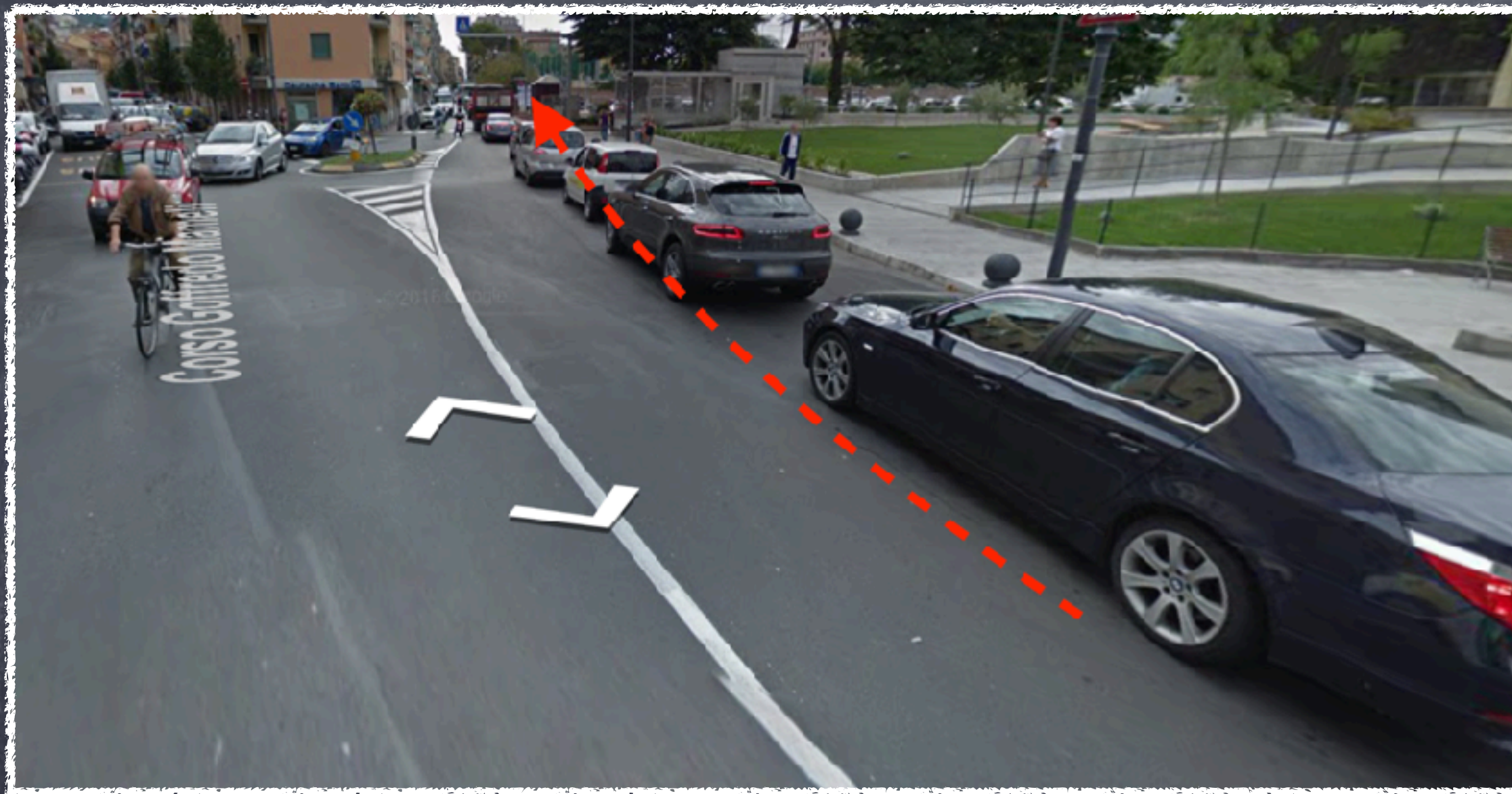
Stay on the right side of the road and
go straight



Stay on the main road , keep going
straight



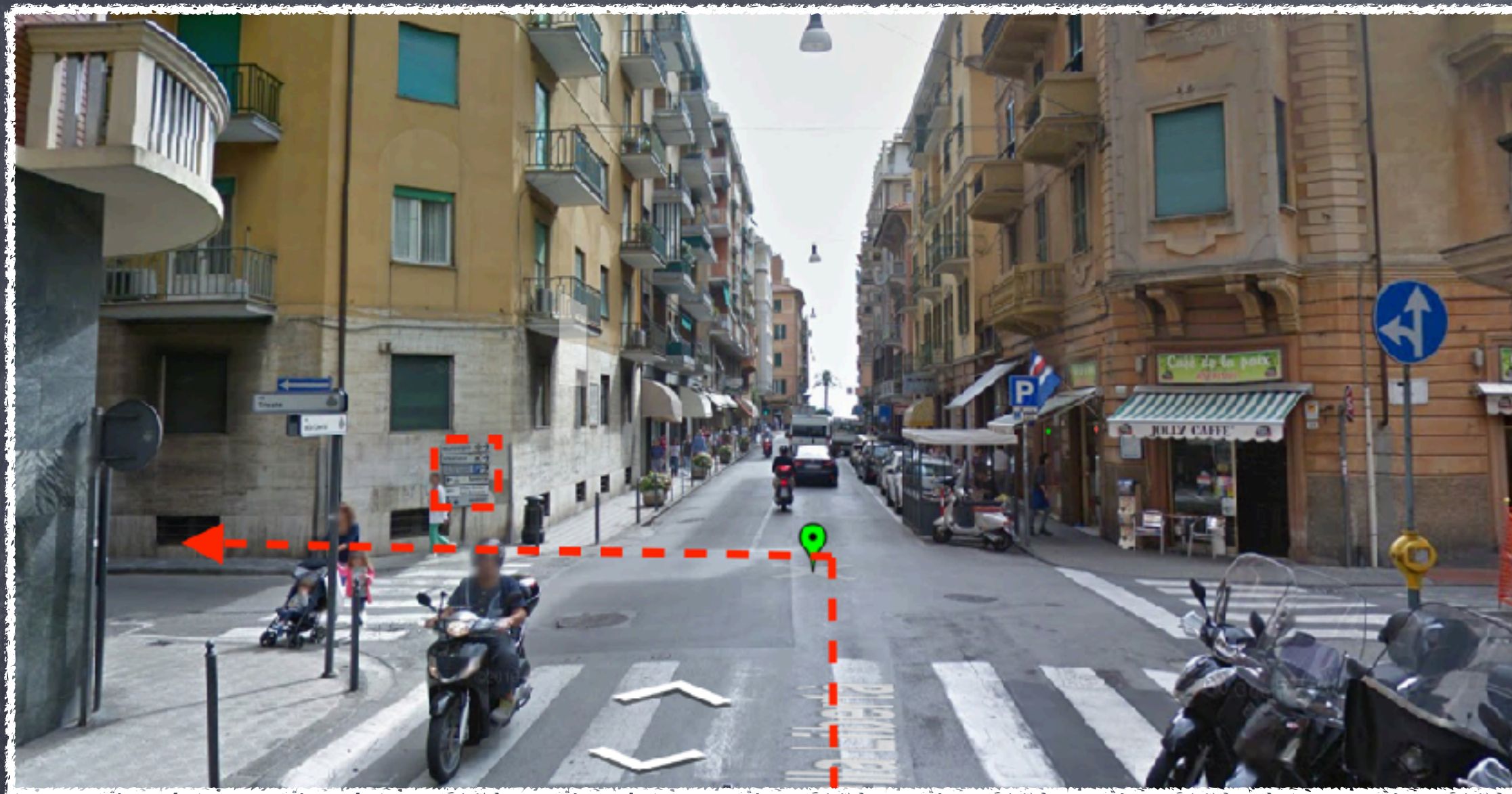
At the roundabout go stay on the right side of the road and go straight



Follow the main road



150m after the bridge you have to turn
left



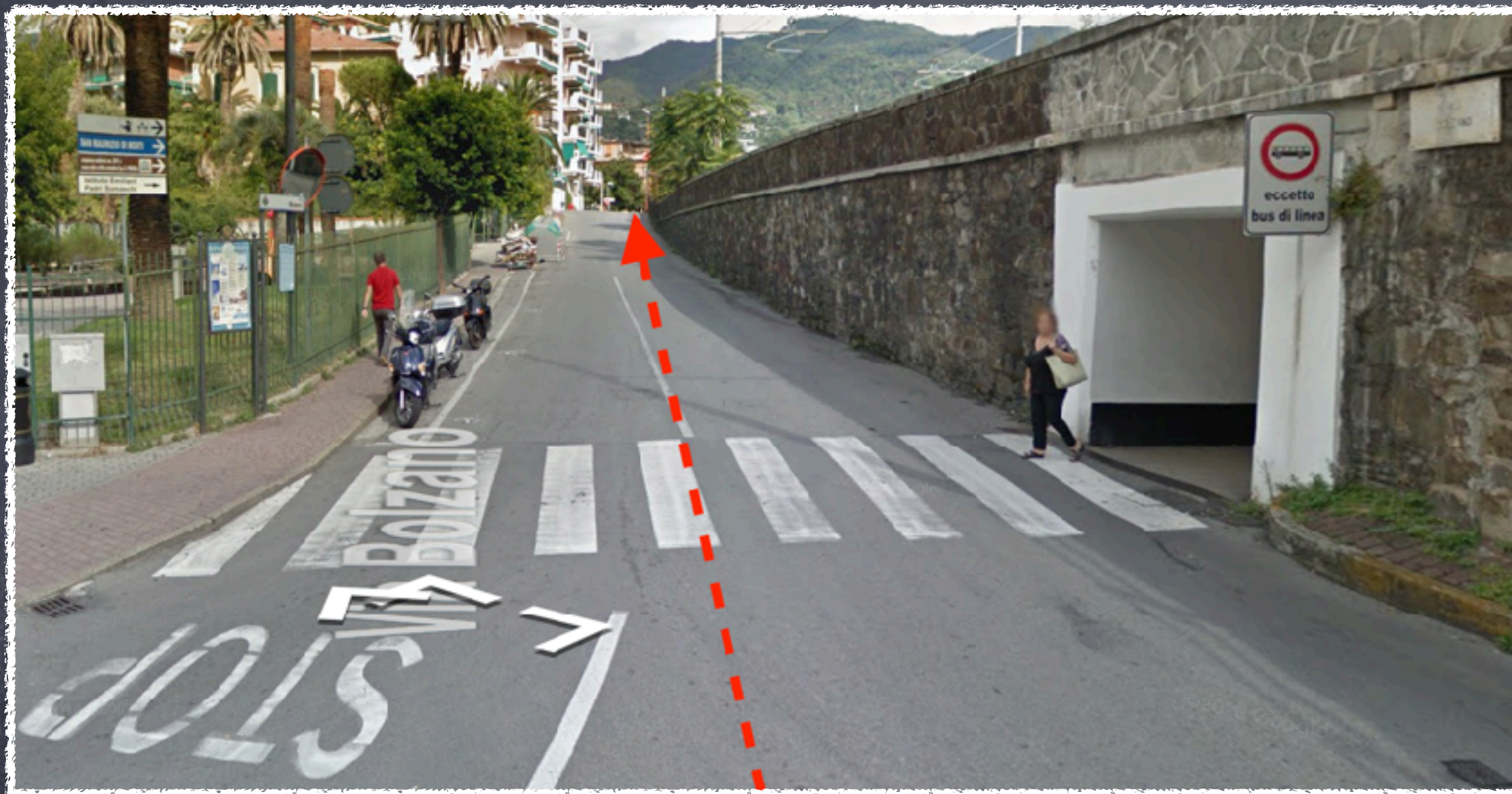
Turn left in via trieste



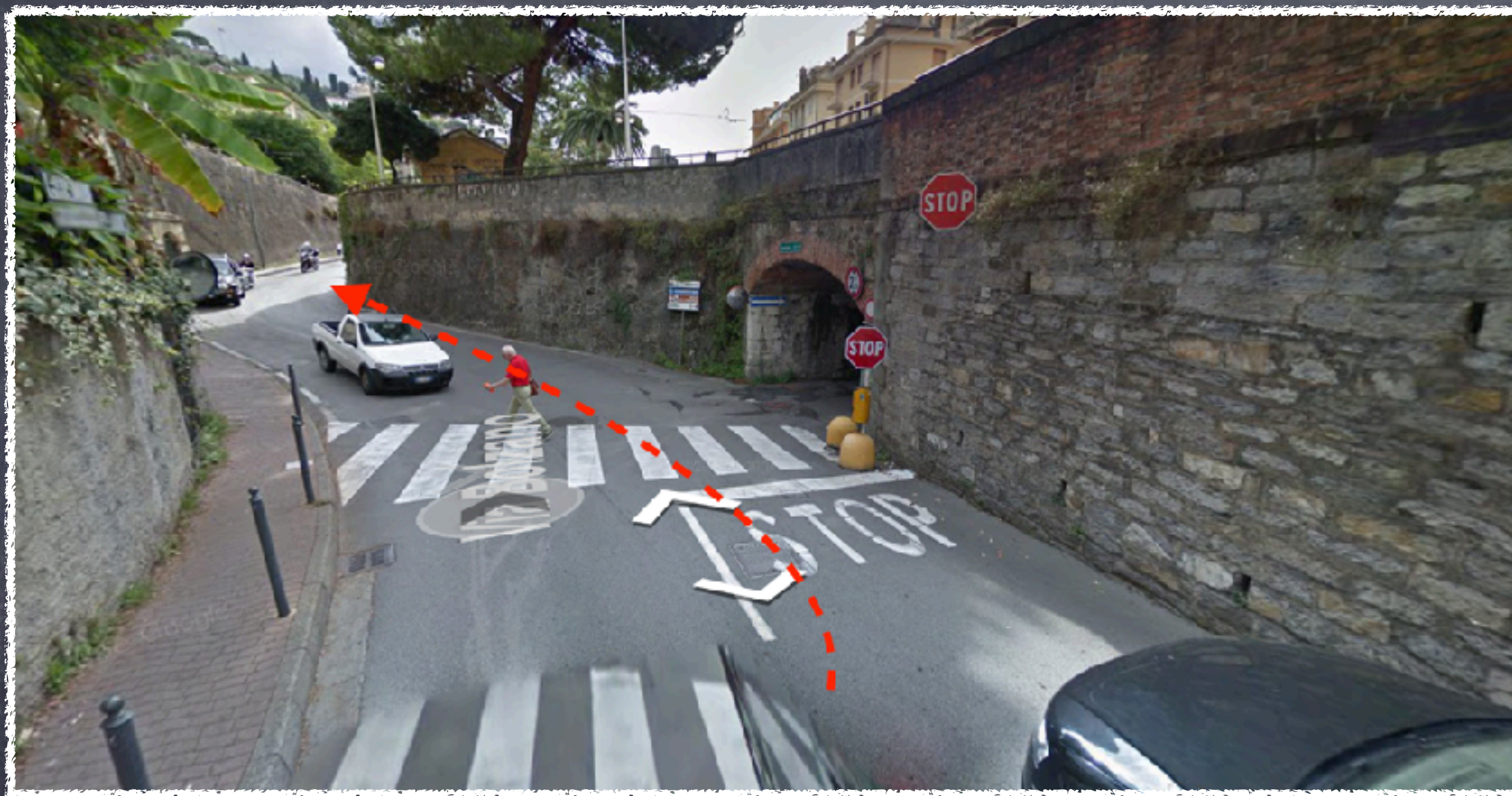
At the stop turn left



Pay attention , just after the bridge
turn right



proceed in via Bolzano



At the stop stay on the main road
proceeding straight



drive along via Betti road become
curvy (-10km)



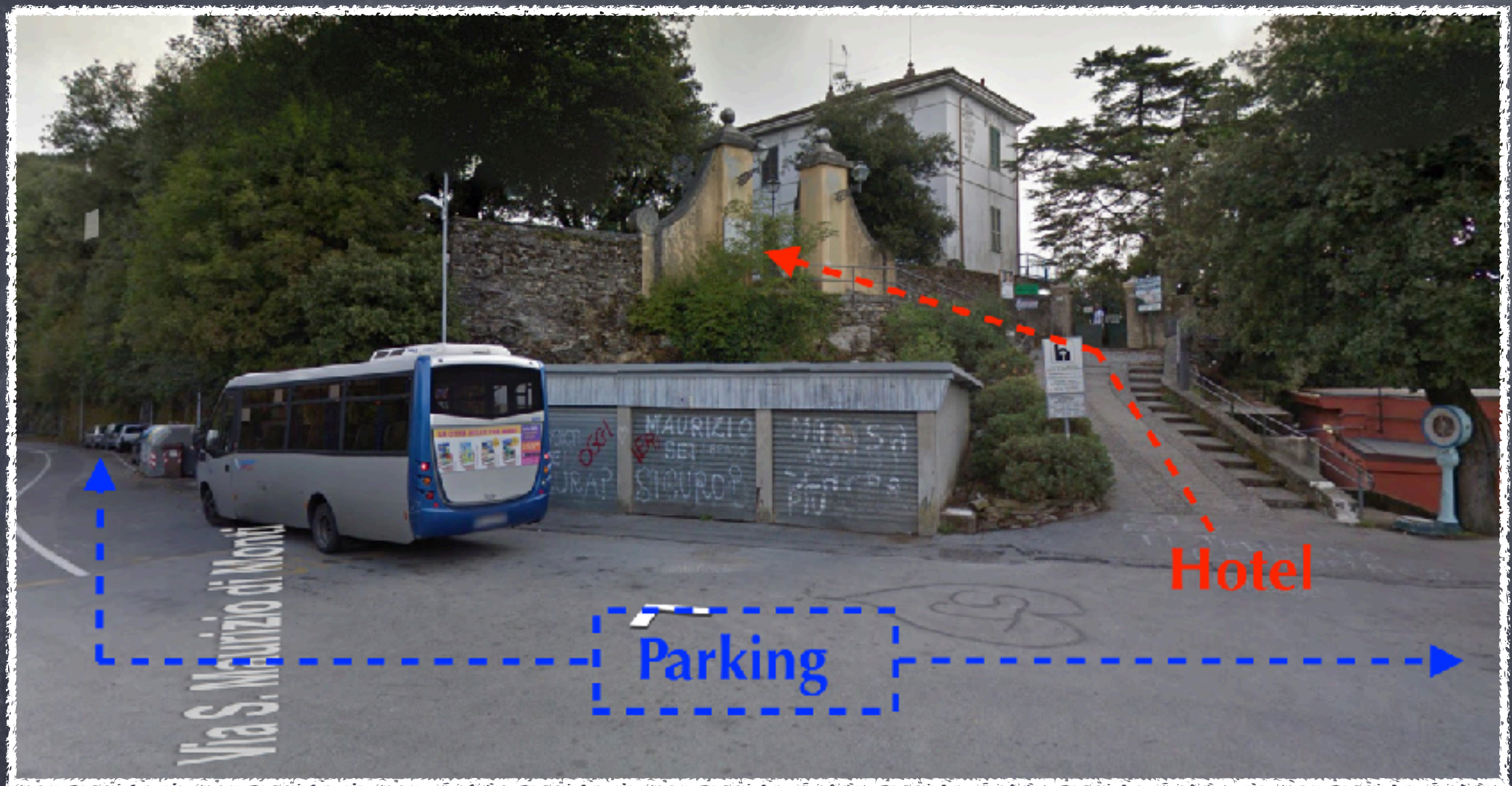
Proceed on sp58 brought
s.Maurizio di Monti



At the end of the small village turn
right to Montallegro



Drive until the end of the road(-3km)



Park the car and walk along the
sanctuary boulevard , in som you are
arrived